

PUPIL ABSENCE IN SCHOOLS – 2021/22 ACADEMIC YEAR SFR SUMMARY

This DfE release reports on pupil absence across the 2021/22 academic year

<https://explore-education-statistics.service.gov.uk/find-statistics/pupil-absence-in-schools-in-england>

Overall absence -
7.8%
National – 7.6%

Persistent absence
22.1%
National – 22.5%

Severe absence
1.7%
National – 1.7%

Headlines

During 2021/22 academic year 7.8% of sessions were missed due to absence in Oxfordshire, this is above (worse) than reported nationally (7.6% of sessions). Persistent absence in Oxfordshire was 22.1%, below (better) than the national average of 22.5%. Severe absence was in-line with national average with a rate of 1.7%

Secondary schools

- Overall absence, persistent absence and severe absence rates are above (worse) than the national average.
- Oxfordshire ranks in the second quartile nationally for persistent absence rates and the third quartile for overall and severe absence rates. The County has the lowest performance amongst statistical neighbours for overall absence in secondary schools.

Primary schools

- Overall absence in Oxfordshire primary schools is above (worse) the national average. The County has the lowest performance out of statistical neighbours for this measure and is placed in the third quartile nationally.
- Persistent absence in Oxfordshire primary schools is below (better) the national average. However, although this places the County in the second quartile nationally the LA ranks 10th out of 11 statistical neighbours for this measure
- Severe absence is in-line with the national average. It has increased by 0.1% in Oxfordshire since last academic year, compared to a 0.1% decrease nationally.

Special schools

- Overall absence, persistent absence and severe absence rates from Oxfordshire special schools were all lower (better) than the national average.
- Oxfordshire is placed in the second quartile for all these absence measures and for persistent absence the LA is 2nd out of 11 statistical neighbours.

Pupil Characteristics

- Absence rates were highest for pupils with an EHC plan – 14% in Oxfordshire compared with 12.1% nationally. This is due to higher authorised absence rates in Oxfordshire (11.1%) than national (10.7%).
- Absence rates continue to be highest for Travellers of Irish Heritage (24.5% compared with 22.1% nationally) and Gypsy/Roma pupils (20.1% - higher than the national figure of 17.8%). The same is also true for persistent absence rates.
- Persistent absence is highest for those pupils with a primary need of SEMH with a rate of 42.6% compared to 41.5% nationally.
- Pupils with Autistic spectrum disorder in Oxfordshire had higher absence rates (13.2%) than the national average for this cohort (11.1%). This is also the case for persistent absence, in Oxfordshire 36.7% compared to 32% nationally.

Headlines	Oxfordshire	Statistical Neighbours	South East	National
Overall absence rate - primary	6.4%	6.1%	6.2%	6.3%
Compared to 20/21	3.2%	3.2%	3.4%	3.6%
Difference from 20/21 (-ve is improvement)	3.2%	2.9%	2.8%	2.7%
National Rank (quartile and rank out of 151)	3 rd (98 th)	-	-	-
SN Rank - (out of 11)	11 th	-	-	-
Persistent absent rates - primary	17.1%	15.8%	17.0%	17.7%
Compared to 20/21	7.0%	7.2%	8.0%	8.8%
Difference from 20/21 (-ve is improvement)	10.1%	8.6%	9.0%	8.9%
National Rank (quartile and rank out of 151)	2 nd (68 th)	-	-	-
SN Rank (out of 11)	10 th	-	-	-
Severe absent rates - primary	0.6%	0.6%	0.6%	0.6%
Compared to 20/21	0.5%	0.6%	0.6%	0.7%
Difference from 20/21 (-ve is improvement)	0.1%	-	-	0.1%
National Rank (quartile and rank out of 151)	2 nd (67 th)	-	-	-
SN Rank (out of 11)	8 th	-	-	-
Overall absence rate - secondary	9.4%	8.8%	9.0%	9.0%
Compared to 20/21	5.3%	5.0%	5.3%	5.5%
Difference from 20/21 (-ve is improvement)	4.1%	3.8%	3.7%	3.5%
National rank (quartile and rank out of 151)	3 rd (101 st)	-	-	-
SN Rank (out of 11)	11 th	-	-	-

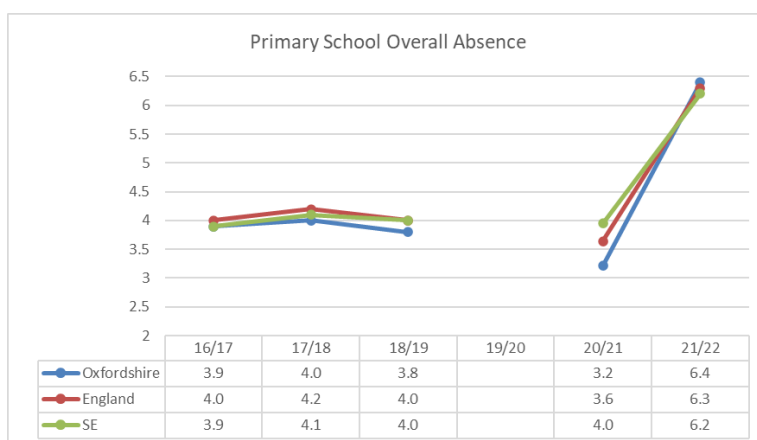
Persistent absence rates - secondary	27.9%	26.8%	27.5%	27.7%
Compared to 20/21	13.5%	12.6%	14.1%	14.8%
Difference from 20/21 (-ve is improvement)	14.4%	14.2%	13.4%	12.9%
National rank (quartile and rank)	2nd (79th)	-	-	-
SN Rank (out of 11)	9th	-	-	-
Severe absent rates - Secondary	2.9%	2.5%	2.7%	2.7%
Compared to 20/21	1.4%	1.3%	1.4%	1.5%
Difference from 20/21 (-ve is improvement)	1.5%	1.2%	1.3%	1.2%
National Rank (quartile and rank out of 151)	3 rd (93 rd)	-	-	-
SN Rank (out of 11)	9 th	-	-	-
Overall absence rate - special	12.3%	12.6%	13.1%	13.2%
Compared to 20/21	15.2%	13.8%	15.6%	15.2%
Difference from 20/21 (-ve is improvement)	-2.9%	-1.2%	-2.5%	-2.0%
National rank (quartile and rank)	2nd (63 rd)	-	-	-
SN Rank (out of 11)	5 th	-	-	-
Persistent absence rate - special	39.0%	38.5%	40.1%	40.4%
Compared to 20/21	51.3%	44.3%	50.8%	48.9%
Difference from 20/21 (-ve is improvement)	-12.3%	-5.8%	-10.7%	-8.5%
National rank (quartile and rank)	2 nd (66 th)	-	-	-
SN Rank (out of 11)	7 th	-	-	-
Severe absent rates - special	4.0%	4.8%	5.4%	5.8%
Compared to 20/21	4.6%	4.7%	5.4%	5.6%
Difference from 20/21 (-ve is improvement)	-0.6%	0.1%	-	0.2%
National Rank (quartile and rank out of 151)	2 nd (44 th)	-	-	-
SN Rank (out of 11)	6 th	-	-	-

PRIMARY SCHOOLS – 2021/22 ACADEMIC YEAR SFR SUMMARY

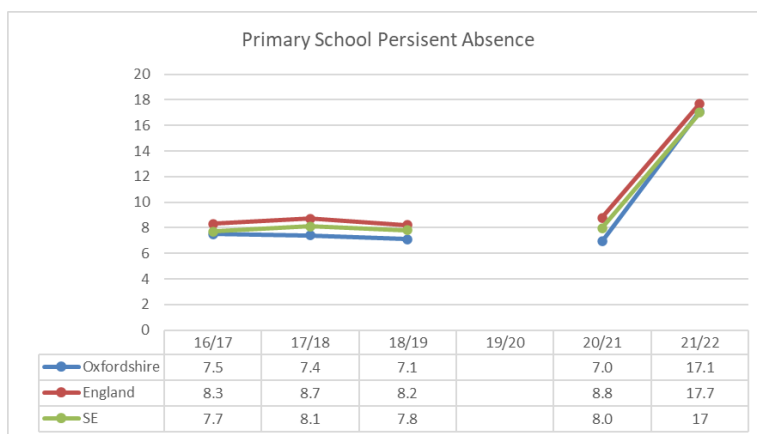
Overall absence -
6.4%
National – 6.3%

Persistent absence
17.1%
National – 17.7%

Severe absence
0.6%
National – 0.6%

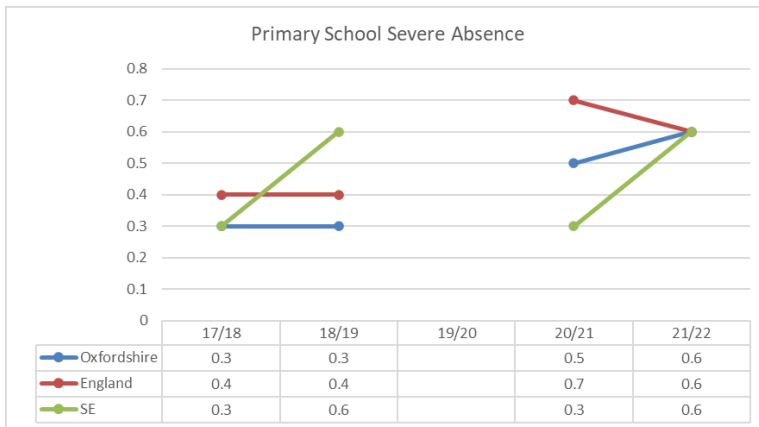
a. Overall absence


- 6.4% of sessions were missed in Oxfordshire primary schools due to absence during 2021/22.
- This rate is slightly above (worse) than the national average (6.3%)
- Oxfordshire is placed in the third quartile nationally and ranks 11th out of statistical neighbours, having the highest overall absence rate of these LAs.
- 5.3% of sessions were authorised and 1.1% were unauthorised
- Illness remains the most frequent reason for absence – 4.2%

b. Persistent absence


- Nationally the persistent absence rate from primary schools increased from 8.8% in 2020/21 to 17.7% in 2021/22
- Persistent absence rates in Oxfordshire primary schools have historically been lower than those nationally and this remains the case, however the County has mirrored the large increases in PA. In 2021/22 17.1% (7,945) pupils were classed as persistent absentees from Oxfordshire primary schools.
- Persistent absence rates in Oxfordshire are placed in the 2nd quartile – ranked 68th out of 151 local authorities.

c. Severe Absence



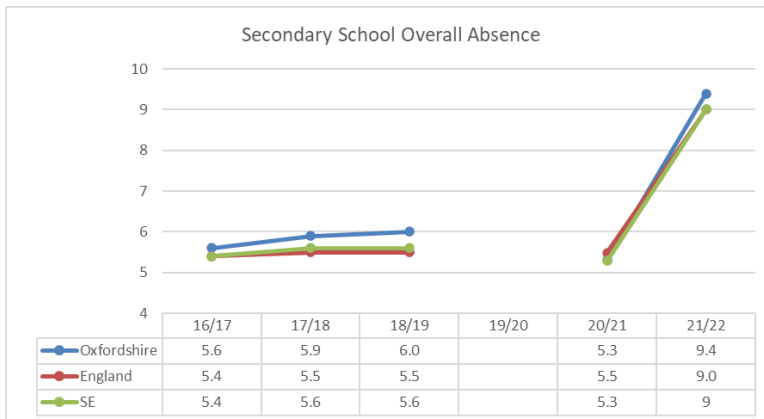
- 0.6% of pupils in primary schools were classed as severely absent during the 2021/22 academic year.
- This is in-line with the national figure.
- In 2021/22 268 pupils were severely absent from Oxfordshire primary schools.
- Oxfordshire is ranked 8th out of statistical neighbours and is placed in the 2nd quartile nationally.

SECONDARY SCHOOLS – 2021/22 ACADEMIC YEAR SFR SUMMARY

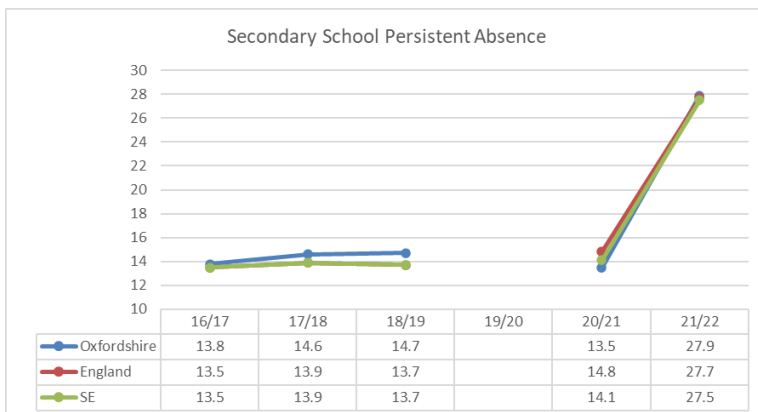
Overall absence -
9.4%
National – 9.0%

Persistent absence
17.1%
National – 17.7%

Severe absence -
2.9%
National – 2.7%

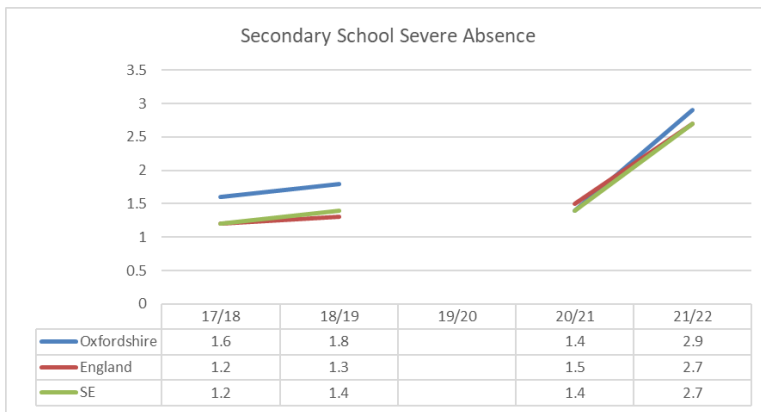
a. Overall absence


- 9.4 % of sessions were missed in Oxfordshire secondary schools due to absence during the 2021/22.
- Absence rates in Oxfordshire secondary schools were above (worse) than the national average of 9%.
- Oxfordshire now ranks 101st out of 151 local authorities and is placed in the third quartile nationally.
- Oxfordshire continues to rank the lowest out of 11 statistical neighbours having the highest level of absence in secondary schools.

b. Persistent absence


- During 2021/22, 27.9% (10,175) of pupils were classed as persistent absentees from Oxfordshire secondary schools. This is just above the national average (27.7%)
- As a result, Oxfordshire is placed in the 2nd quartile nationally and ranked 9th compared to statistical neighbours.

c. Severe Absence



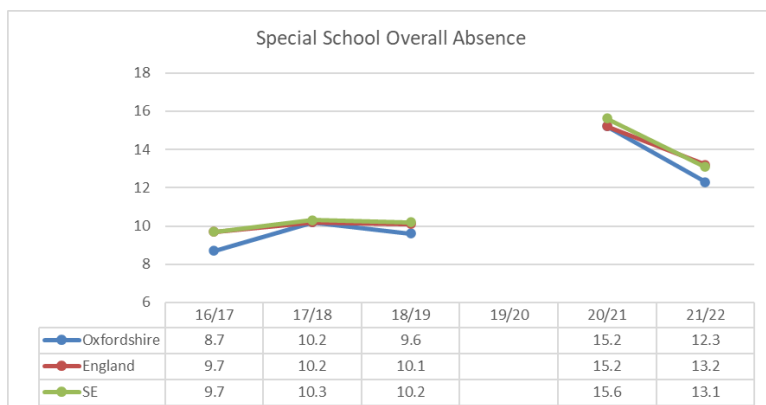
- 2.9% of pupils in secondary schools were classed as severely absent during the 2021/22 academic year.
- This is just above the national average of 2.7%.
- In 2021/22 1,074 pupils were severely absent from Oxfordshire secondary schools.
- Oxfordshire is ranked 9th out of statistical neighbours and is placed in the 3rd quartile nationally

SPECIAL SCHOOLS – 2021/22 ACADEMIC YEAR SFR SUMMARY

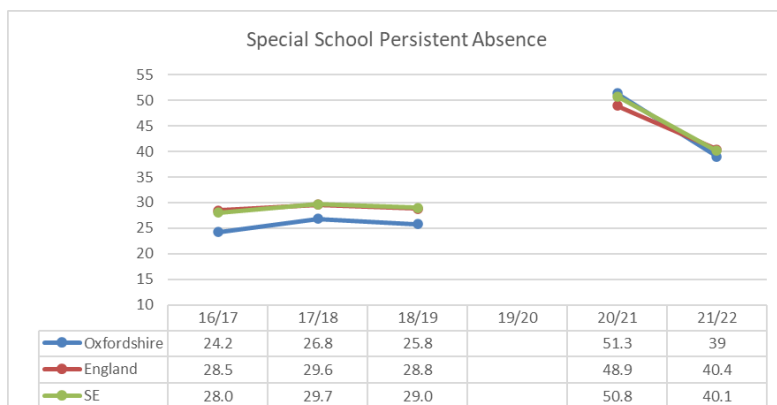
Overall absence -
12.3%
National – 13.2%

Persistent absence
39.0%
National – 40.4%

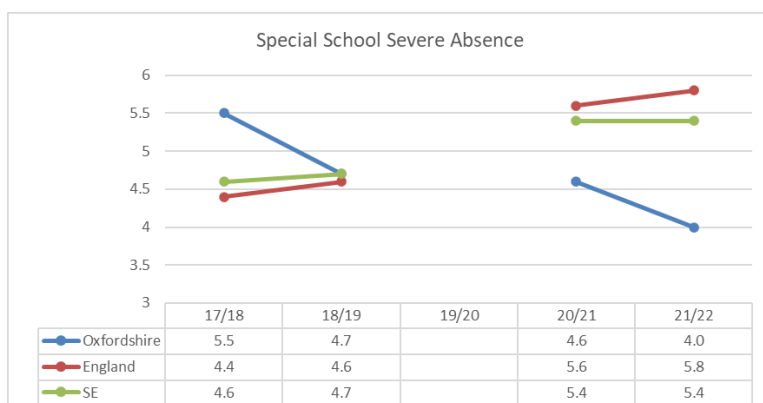
Severe absence -
4.0%
National – 5.8%

a. Overall absence


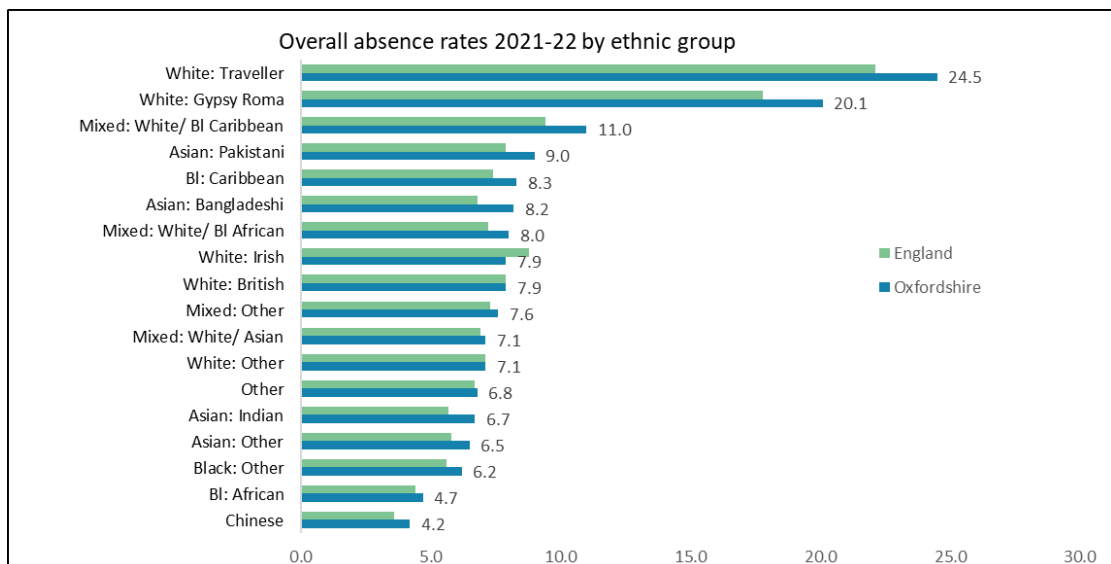
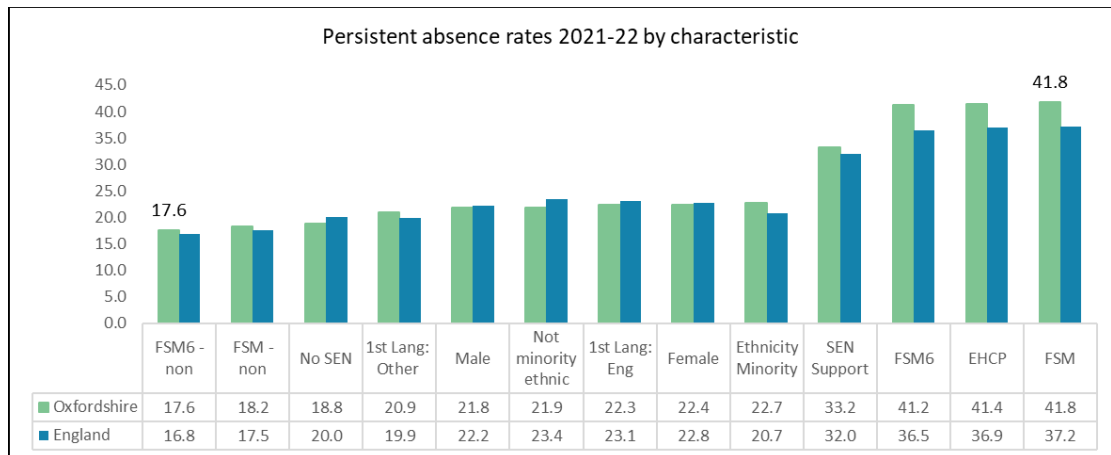
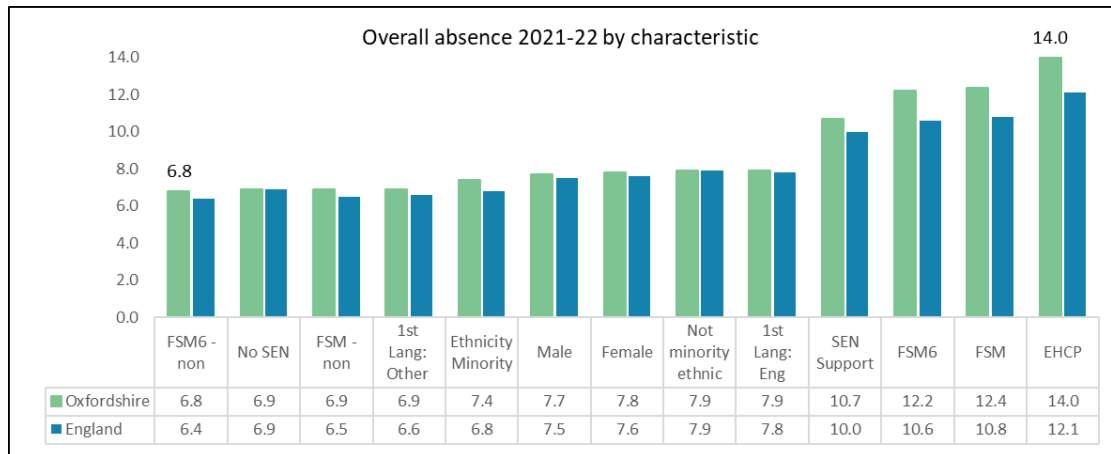
- Absence rates from special schools decreased nationally and in Oxfordshire during 2021/22
- 12.3% of sessions were missed in Oxfordshire special schools due to absence during 2020/21, below that reported nationally.
- Oxfordshire ranks 63rd nationally and 5th out of 11 statistical neighbours for this measure.

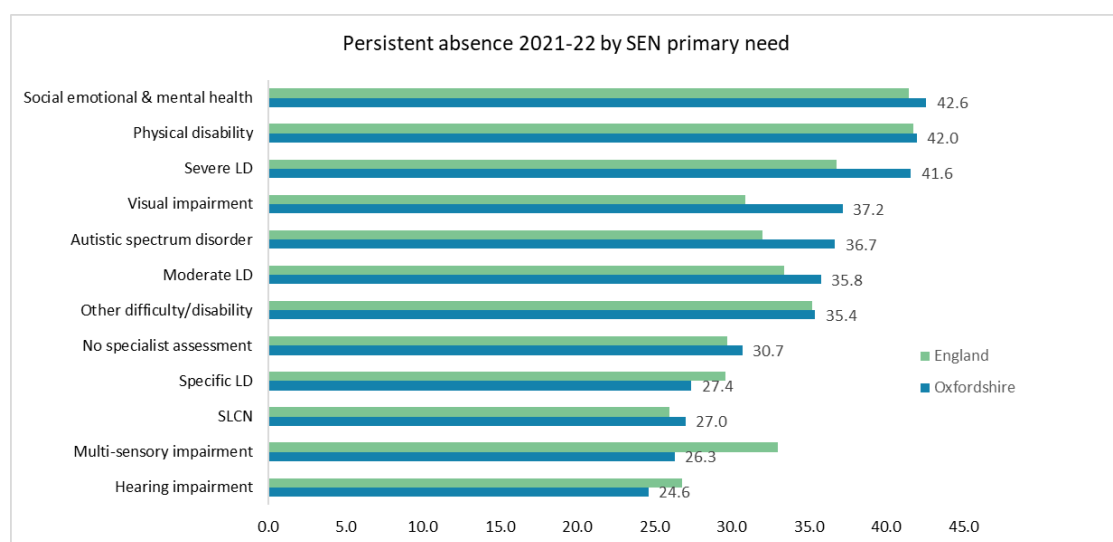
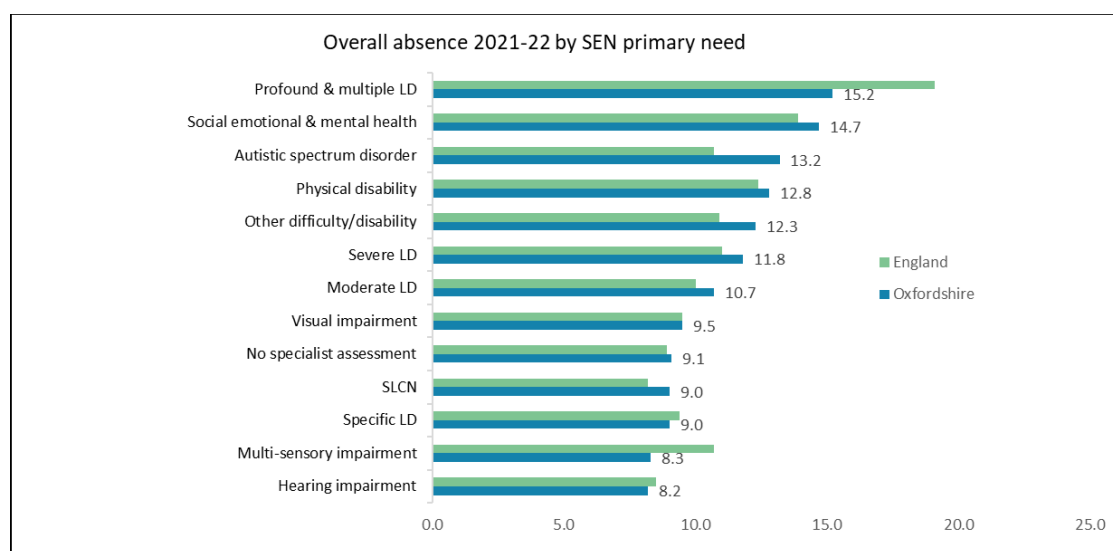
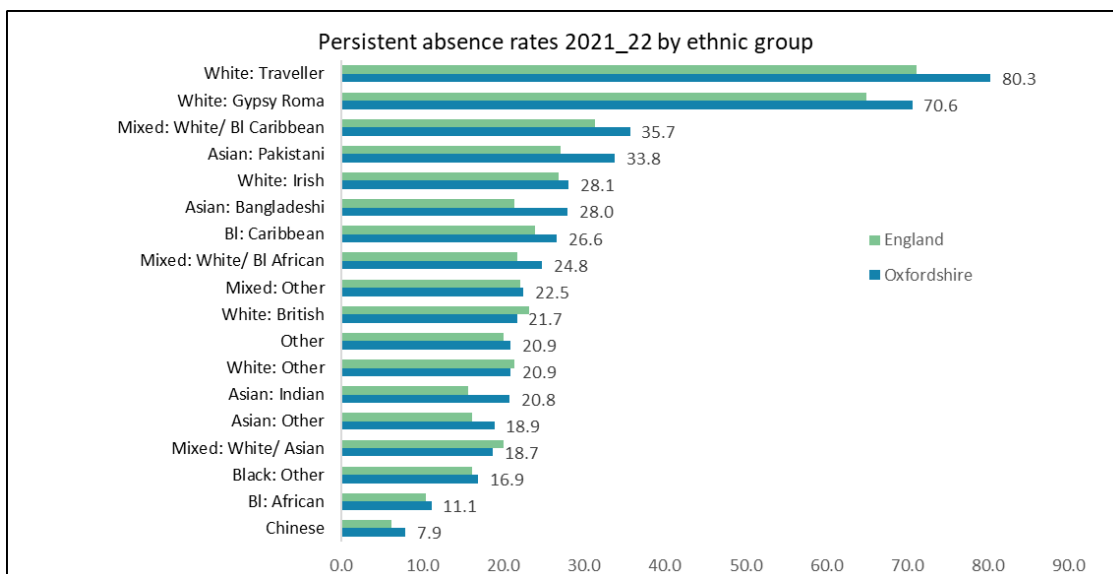
b. Persistent absence


- 39% of pupils attending special schools were classed as persistently absent during 2021/22. This equates to 453 pupils.
- This is below (better) than that nationally (40.4%)
- Oxfordshire ranks 66th out of 151 local authorities for this measure and 7th out of 11 statistical neighbours

c. Severe Absence


- 4.0% of pupils in special schools were classed as severely absent during the 2021/22 academic year.
- This is below (better) the national average of 5.8%.
- In 2021/22 46 pupils were severely absent from Oxfordshire special schools.
- Oxfordshire is ranked 6th out of statistical neighbours and is placed in the 2nd quartile nationally

ABSENCE BY PUPIL CHARACTERISTICS – 2021/22 ACADEMIC YEAR SFR SUMMARY




Contact:

Hayley Good, Deputy Director for Education, Hayley.good@oxfordshire.gov.uk

Kim James, Head of Learning and School Improvement, Kim.james@oxfordshire.gov.uk

Jo Goodey, Education Inclusion Manager, Joanne.goodey@oxfordshire.gov.uk

Jenny Law, Performance & Information Manager (Education), Jenny.law@oxfordshire.gov.uk

V1 16/03/2023